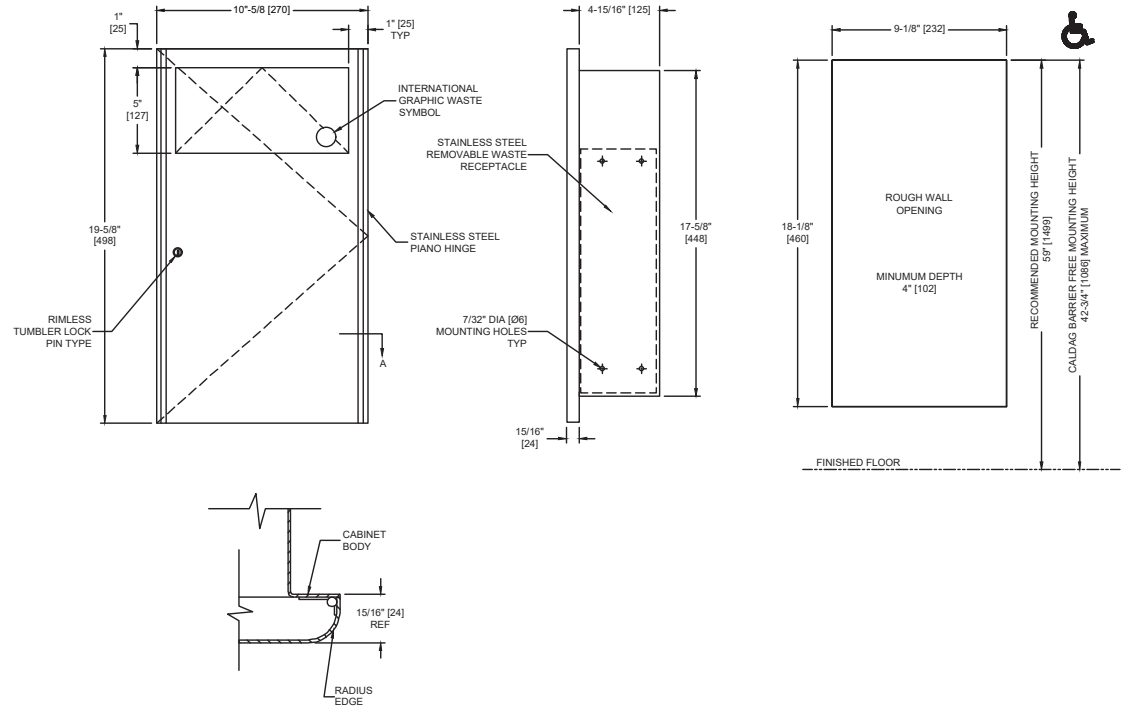


Profile™ Collection Sanitary Napkin Disposal – Recessed

Feminine Hygiene Vendors and Disposals

Profile

MasterFormat Section 10 28 13



Scan for Information



SUSTAINABILITY/LEED

MR 4.1 (1) MR 6 (1) EQ 4.2 (1)
MR 4.2 (1) EQ 4.1 (1) EQ 4.4 (1)

NOTE:
ALL DIM'S INCH [MM]
ILLUSTRATION FOR REF ONLY AND NTS

PRODUCT OVERVIEW

Features a self-closing stainless steel push door that covers the disposal opening along with a removable 1.8 gal. (7 L) stainless steel waste receptacle. Users push door to deposit waste material. Unit is emptied by removing bottom waste container and inverting over collection bag. Safety finger grip on waste receptacle provides convenient grip for service. Locked door prevents unauthorized access or removal. Full face door shall be fabricated of 18 gauge.

KEY FEATURES & SPECIFICATIONS

- Robust 16 gauge Stainless Steel face
- Curved (radius) edges add elegance
- Type 304 Stainless Steel - Satin Finish
- Recessed
- 1.8 Gal. (7.0 L) Waste Capacity

OPERATION & MAINTENANCE

Users push door to deposit waste material into receptacle. Push-door is self-closing. Empty refuse by removing waste container and inverting over collection bag. Safety finger grip on waste container provides convenient grip for service. Locked door prevents unauthorized access or removal.

TECHNICAL INFORMATION / PRODUCT PROPERTIES

| Property | Value |
|--------------|--|
| Dimensions | 10-5/8" [270] W x x 4-15/16" [125] D x 19-5/8" [498] H |
| Construction | Type 304 Stainless Steel - Satin Finish |
| Mounting | Recessed |
| Capacity | 1.8 Gal. (7.0 L) Waste Capacity |

INSTALLATION

Mount unit with #10 self-threading screws (by others) through concealed mounting holes provided. For compliance with 2010 ADA Accessibility Standards unit so that center of waste door is 40" [1016] maximum Above Finished Floor (AFF). For general utility unit should be installed in a RWO with its bottom edge 16-3/4" [425] above finished floor. Note that bottom edge of RWO is 3/4" [19] above bottom of unit.

Rough Wall Opening (RWO) required is 9-1/8" [232] W x 18-1/8" [460] H x 4-1/4" D [108] minimum

WARRANTY

One (1) Year from date of Invoice