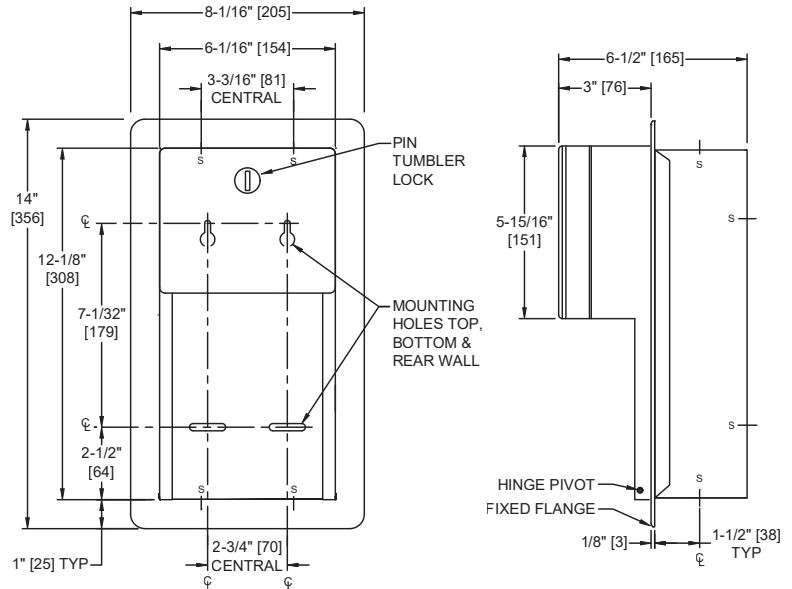
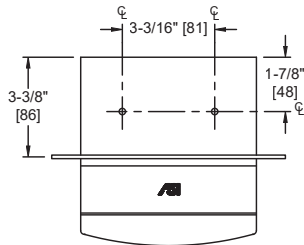


Roval™ Twin Hide-A-Roll Toilet Tissue Dispenser – Semi-Recessed

Toilet Tissue Dispensers

Roval

MasterFormat Section 10 28 13



Scan for Information



SUSTAINABILITY/LEED

MR 4.1 (1) MR 6 (1) EQ 4.2 (1)
MR 4.2 (1) EQ 4.1 (1) EQ 4.4 (1)

NOTE:
ALL DIM'S INCH [MM]
ILLUSTRATION FOR REF ONLY AND NTS

PRODUCT OVERVIEW

Holds two rolls up to 5-1/4" diameter [Ø133] (double roll capacity 3600 sheets). Top roll automatically drops in place when bottom roll is used up. Type 304 satin finish stainless steel cabinet and mechanism. Theft-resistant spindles with integral plated steel endpins. Includes semi-recessed flange for unit.

KEY FEATURES & SPECIFICATIONS

- "Hide-A-Roll" Dispenser holds Two Rolls
- 22 gauge Type 304 Stainless Steel - Satin Finish
- Semi-Recessed
- Door hinges shall be heavy-duty stainless steel 3/16" Dia. [Ø5] rivets
- Held closed with a flush rimless tumbler lock

OPERATION & MAINTENANCE

Reloading instructions are printed on graphic label inside door. Bottom roll is depleted prior to top roll automatically dropping into lower position for use. Empty rollers cannot be removed without key unlocking door.

TECHNICAL INFORMATION / PRODUCT PROPERTIES

Property	Value
Dimensions	8-1/16" [205] W x 14" [356] H x 6-1/12" [165] D
Construction	Type 304 Stainless Steel - Satin Finish
Mounting	Semi-Recessed
Capacity	Holds two 5 1/4" Dia. [Ø133]

INSTALLATION

Recess mount unit in wall using four (4) 1/4" x 1" [M6 x 25] Philips pan-head self-threading screws (provided by others) through slots on rear wall into suitable wall preparation (by others). Top two (2) mounting holes through back are keyhole slots for ease in hanging unit on pre-installed screws. Bottom two (2) mounting holes are horizontal slots for ease of adjustment. Alternate mounting holes are provided in top and bottom of unit for installation convenience. For compliance with 2010 ADA Accessibility Standards and 2015 ABA Standards install unit so that center line of dispenser is 7" [178] min to 9" [229] max in front of the toilet and axis of bottom roll is 15" [381] min AFF (Above Finished Floor) to 48" [1219] max AFF.

Rough Wall Opening (RWO) required is 6-1/4" [159] W x 12-1/4" [311] H x 3-3/8" [86] D minimum

OPTIONS
WARRANTY

One (1) Year from date of Invoice