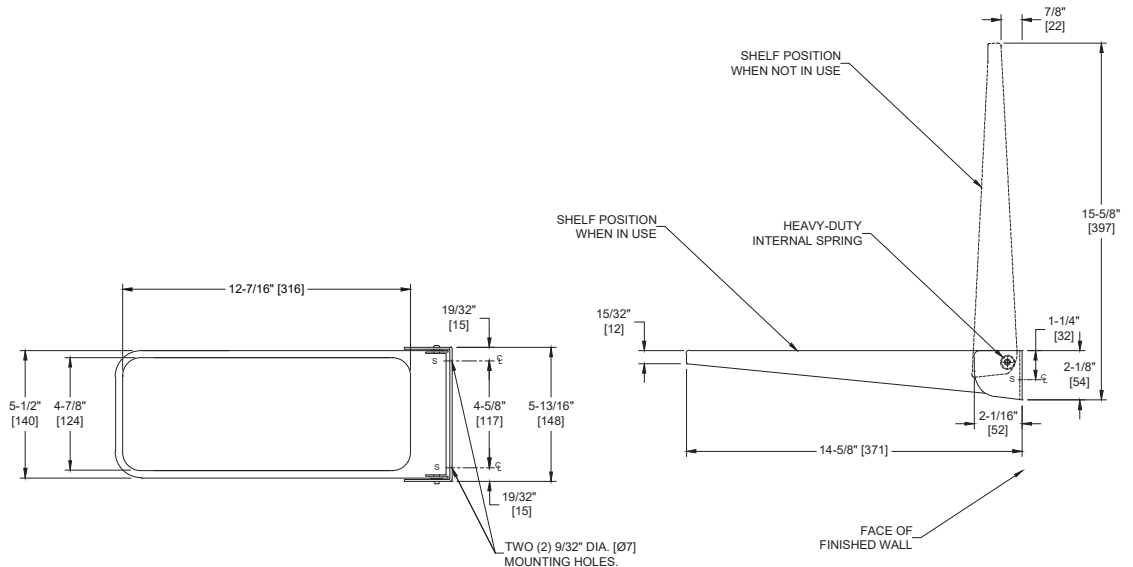
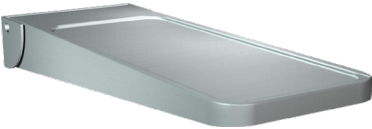


Shelves, Utility (Fold Down-type) – Surface Mounted

Shelves

MasterFormat Section 10 28 13



Scan for Information



SUSTAINABILITY/LEED

MR 4.1 (1) MR 6 (1) EQ 4.2 (1)
MR 4.2 (1) EQ 4.1 (1) EQ 4.4 (1)

NOTE:
ALL DIM'S INCH [MM]
ILLUSTRATION FOR REF ONLY AND NTS
FOR CLEANING INSTRUCTIONS SEE APPROPRIATE SECTIONS IN
PRODUCT CARE & MAINTENANCE BULLETIN (PCM) ON ASI WEBSITE

PRODUCT OVERVIEW

Top surface of stainless steel shelf includes a raised rim to prevent objects from slipping off shelf. Internal spring counterbalance is captive and suitable for heavy duty service. Shelf is manually lowered and retained in operating position by placing a weight such as a pocketbook or small package upon shelf. Shelf automatically returns to vertical storage position when unloaded.

KEY FEATURES & SPECIFICATIONS

- Folds down when needed
- Type 304 Stainless Steel - Satin Finish
- Surface Mounted
- Shelf folds down when not in use

OPERATION & MAINTENANCE

Shelf is manually lowered and retained in operating position by placing a weight such as a pocketbook or small package upon shelf. Shelf automatically returns to vertical storage position when unloaded.

TECHNICAL INFORMATION / PRODUCT PROPERTIES

Property	Value
Dimensions	Open: 5-13/16" [148] W x 2-1/8" H [54] x 15-5/8" [397] L Folded: 5-13/16" [148] W x 15-5/8" [397] H x 2-1/16" [52] D
Construction	Type 304 Stainless Steel - Satin Finish Shelf Construction 18-8, type 304, #18 gauge (.048 in. <1.22mm> thick) stainless steel. Unitized all welded construction. Exposed surfaces have satin finish. Edges and corners are radiused and burr free. Bracket Construction 18-8, type 304, #14 gauge (.075 in. <1.91mm> thick) stainless steel. Exposed surfaces have satin finish. Edges and corners are radiused, and burr free.
Mounting	Surface Mounted

INSTALLATION

Unit is surface mounted. Secure unit to wall or toilet partition with hardware supplied by installer to match installation type. Ensure that mounting configuration complies with local building codes.

SCHEDULE OF AVAILABILITY

No Options Available

WARRANTY

One (1) Year from date of Invoice