

Toilet Seat Cover & Toilet Tissue Dispenser, Dual Access for Handicapped – Partition Mounted

Specialty Accessories

MasterFormat Section 10 28 13

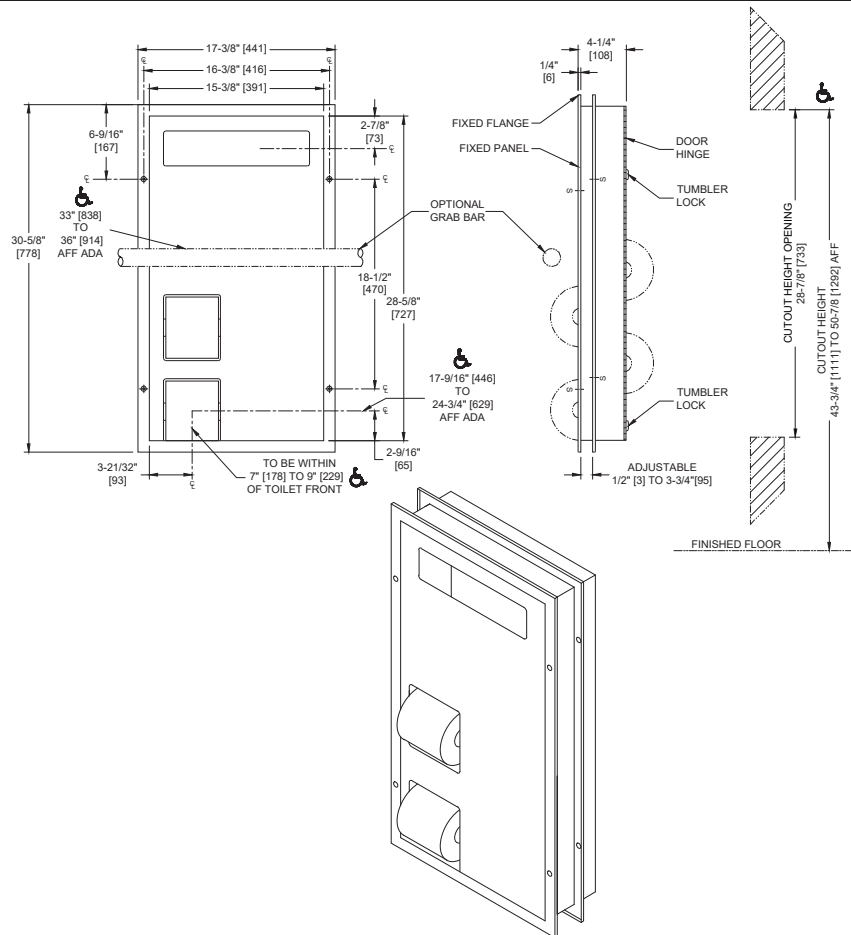


Scan for Information



SUSTAINABILITY/LEED

MR 4.1 (1) MR 6 (1) EQ 4.2 (1)
MR 4.2 (1) EQ 4.1 (1) EQ 4.4 (1)



NOTE:
ALL DIM'S INCH [MM]
ILLUSTRATION FOR REF ONLY AND NTS

PRODUCT OVERVIEW

Holds and dispenses 1000 standard single or half-fold paper toilet seat covers contained in supply box and four (4) standard or 1800 sheet 4-1/2" [114] x 5-1/4" diameter [Ø133] toilet paper rolls. One side mounts flush to partition of barrier-free side to allow for grab bar. Usable both sides but serviced from one side. Access door is opposite HC stall. Internal baffles prevent line of sight view from either side through unit at any time. Cabinet door is held closed with two (2) tumbler locks keyed alike to other ASI washroom equipment. Cabinet includes theft and vandal resistant rollers molded of high-impact resistant plastic with integral molded-in stainless steel endpins and four (4) rollers [p/n R-004] (supplied). Seat cover dispenser panel and toilet paper dispenser door shall be 18 gauge type 304 stainless steel alloy 18-8. Face frame and cabinet shall be 22 gauge same grade material.

KEY FEATURES & SPECIFICATIONS

- Dual Access Combination Unit for ADA Stalls
- Internal baffles prevent line of sight between stalls
- Type 304 Stainless Steel - Satin Finish
- Partition Mounted
- ADA Compliant - One side mounts flush on barrier-free compartment to allow grab bar clearance.

OPERATION & MAINTENANCE

Seat covers are self-feeding until supply is depleted. Toilet paper rolls feed freely until depleted and level of supply is constantly visible for low-level warning. Locked door prevents unauthorized removal. Toilet paper rolls and paper seat covers are serviced by unlocking and opening door opposite HC stall on schedule determined by maintenance requirements. Toilet paper spindles are carried in vandal resistant sub-frame accessible when door is opened. Barrier baffle panels preserve privacy between stalls at all times.

TECHNICAL INFORMATION / PRODUCT PROPERTIES

Property	Value
Dimensions	17-3/8" [441] W x 30-5/8" [778] H x 4-1/2" [114] D
Construction	Type 304 Stainless Steel - Satin Finish
Mounting	Partition Mounted
Capacity	

INSTALLATION

Mount unit in partition using #10 x 3/4" [M5x19] Philips oval head self-threading screws (supplied). Holes in flanges are offset to prevent screw interference. For compliance with ICC/ANSI A-117.1-2003 and 2010 ADA Accessibility Standards top of cutout should be between 43-3/4" [1111] and 50- 7/8" [1292] AFF. One trim-mounting flange adjusts for partition thickness of 1/2" [13] to 3-3/4" [95]. To comply with CalDAG mounting height, top of cutout should 42-7/8" [1089] maximum Above Finished Floor (AFF) maximum. Note partition cutout is 7/8" [22] below top of face trim. If optional grab bar is used (not supplied) it is positioned across unit with top of grip surface at 33" [838] minimum AFF. Partition Cut-Out (PCO) required is 15-1/2" [394] W x 28-7/8" [733] H x 1/2" [13] to 3-3/4" [95] thick partition

ADDITIONAL INFORMATION

N/A

WARRANTY

One (1) Year from date of Invoice